



Make Good Products for Elders

User Manual



Item:KDB-506

Manufactuer: Zhongshan Kangdebao(KDB) Rehabilitation Equipment Co.,Ltd.
Add: One of the 1st floor, No. 24, Longcheng Road, Shenglong Village, Xiaolan Town, Zhongshan City,
Guangdong Province, China.

Preface:

Thanks for you choosing our produciton.

You will enjooyo our after-sales service thoughtfully. Before using the product, please read this User Manaul carefully and keep it properly.

Warranty:

- 1.The warranty period of this product will start from your purchase day. Accessories is 3 months, and main frame is 1 year.
- 2.Following conditions are not covered in warranty scope:
 - a.Modify the structure of the product by yourself.
 - b.Damage caused by improper use and maintainance.
 - c.Wheels, products caused by external deformation, damage, appearance of artificial scratching, leather surface and other fragile products damage.
- 3.We will offer paid service for those conditions expired warranty period or uncovered warranty.
- 4.Please contact with our authorized dealers or after-sales center if you have any questions on our product.

Warranty Card:

Order Number: _____

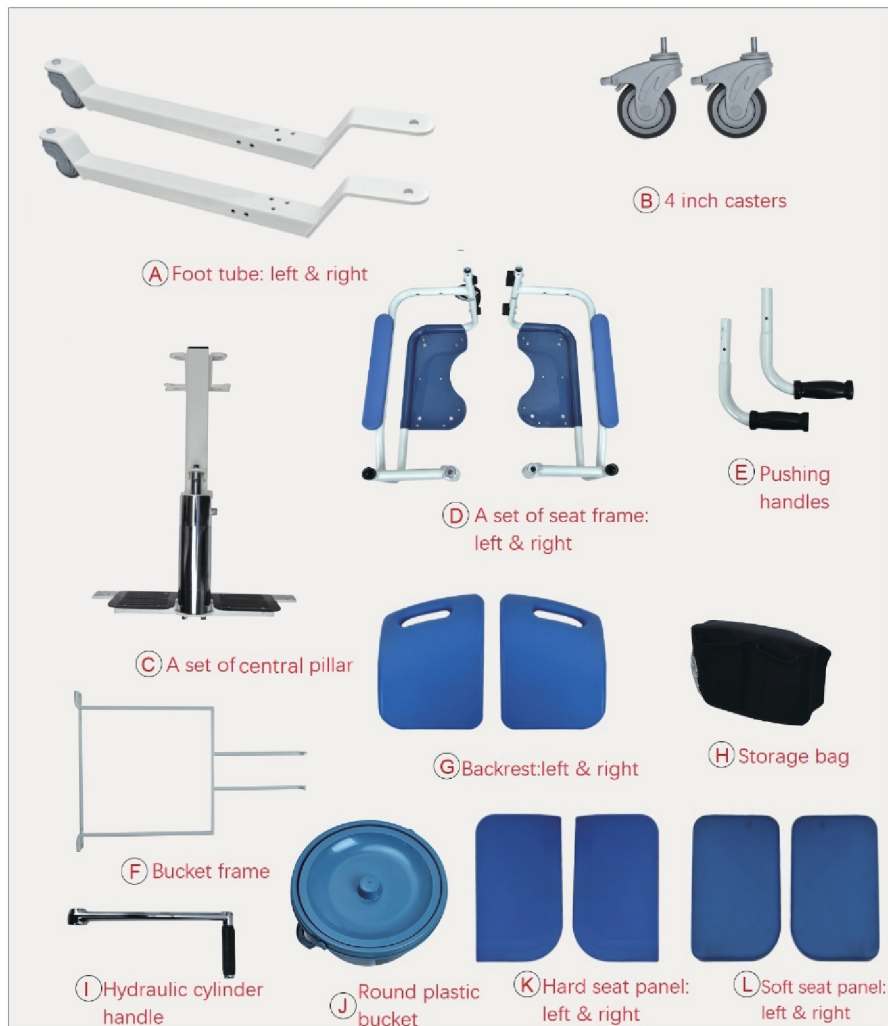
Name: _____

Contact No. _____

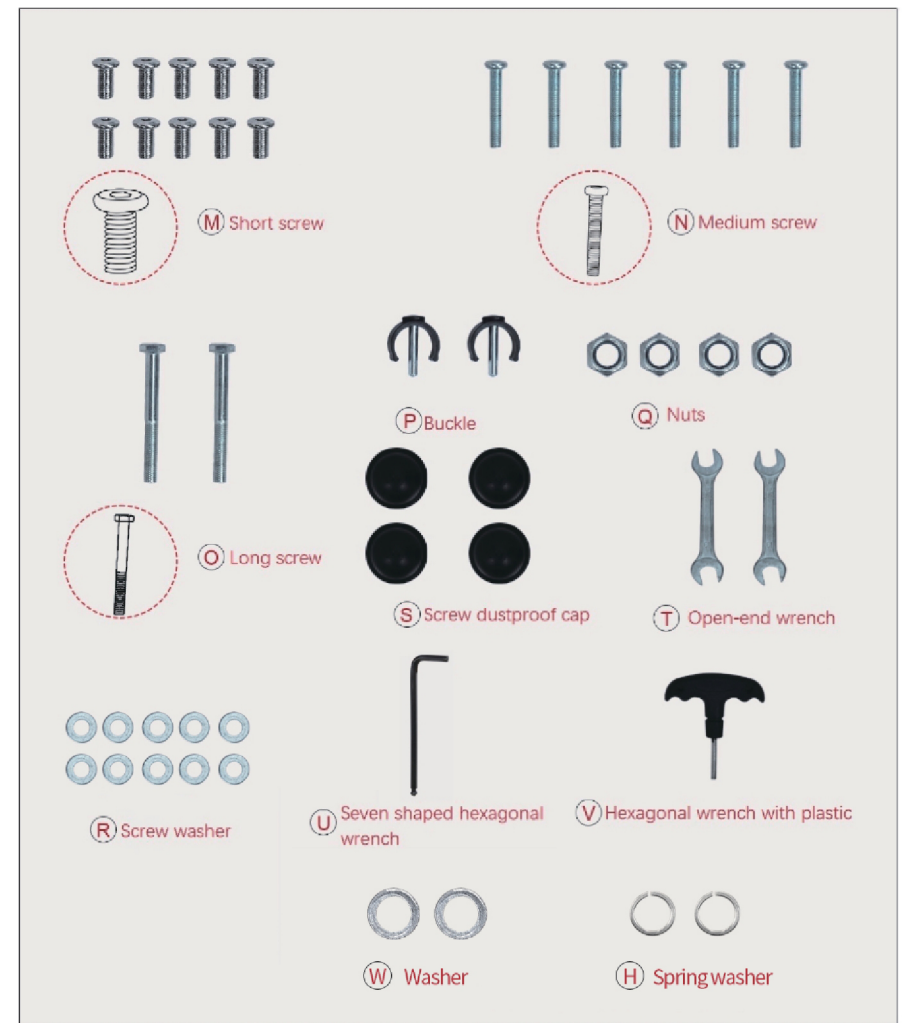
Purchase Date: _____

User Add: _____

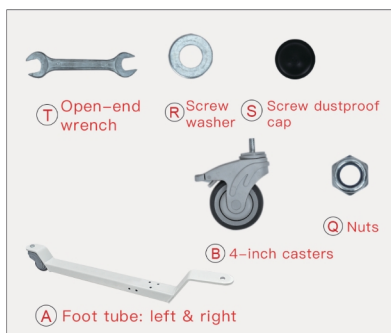
【Installation steps】



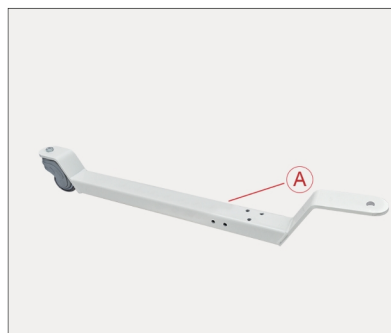
1. ① ② ③ ④ ⑤ ⑥ ⑦ ⑧ ⑨ ⑩ ⑪ ⑫ ⑬ ⑭ ⑮ ⑯ ⑰ ⑱ ⑲ ⑳ ㉑ ㉒ ㉓ ㉔ ㉕ ㉖ ㉗ ㉘ ㉙ ㉚ ㉛ ㉜ ㉝ ㉞ ㉟ ㊱ ㊲ ㊳ ㊴ ㊵ ㊶ ㊷ ㊸ ㊹ ㊺ ㊻ ㊼ ㊽ ㊾ ㊿ ① ② ③ ④ ⑤ ⑥ ⑦ ⑧ ⑨ ⑩ ⑪ ⑫ ⑬ ⑭ ⑮ ⑯ ⑰ ⑱ ⑲ ⑳ ㉑ ㉒ ㉓ ㉔ ㉕ ㉖ ㉗ ㉘ ㉙ ㉚ ㉛ ㉜ ㉝ ㉞ ㉟ ㊱ ㊲ ㊳ ㊴ ㊵ ㊶ ㊷ ㊸ ㊹ ㊺ ㊻ ㊼ ㊽ ㊾ ㊿



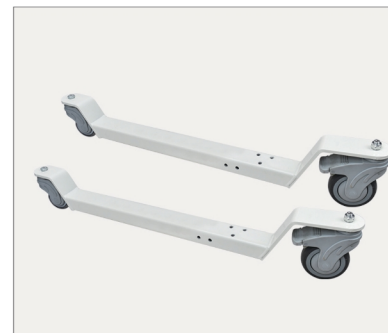
2. ① ② ③ ④ ⑤ ⑥ ⑦ ⑧ ⑨ ⑩ ⑪ ⑫ ⑬ ⑭ ⑮ ⑯ ⑰ ⑱ ⑲ ⑳ ㉑ ㉒ ㉓ ㉔ ㉕ ㉖ ㉗ ㉘ ㉙ ㉚ ㉛ ㉜ ㉝ ㉞ ㉟ ㊱ ㊲ ㊳ ㊴ ㊵ ㊶ ㊷ ㊸ ㊹ ㊺ ㊻ ㊼ ㊽ ㊾ ㊿ ① ② ③ ④ ⑤ ⑥ ⑦ ⑧ ⑨ ⑩ ⑪ ⑫ ⑬ ⑭ ⑮ ⑯ ⑰ ⑱ ⑲ ⑳ ㉑ ㉒ ㉓ ㉔ ㉕ ㉖ ㉗ ㉘ ㉙ ㉚ ㉛ ㉜ ㉝ ㉞ ㉟ ㊱ ㊲ ㊳ ㊴ ㊵ ㊶ ㊷ ㊸ ㊹ ㊺ ㊻ ㊼ ㊽ ㊾ ㊿



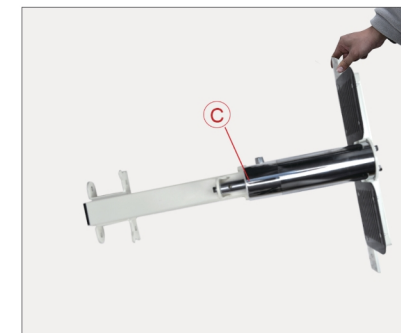
3. Take out all accessories about the foot tube as assembly as shown in the picture as above.



4. Take out foot tube



9. Install the other side in same way. Both sides are finished as shown as above.



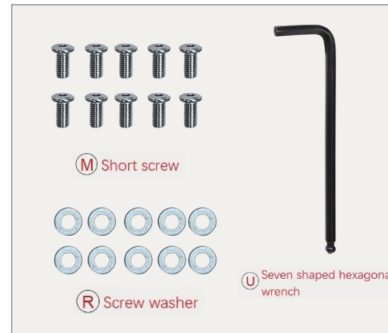
10. Take out the set of central pillar, it is necessary to stand it up so that to continue with assembly more conveniently. (Kind reminder: Pay attention to safety when taking out and installing as it's heavy, better to search for another person's help if necessary.)



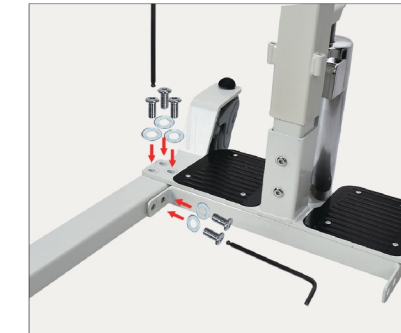
5. Take out the casters, press down the brake of casters before putting into the foot tube's hole.



6. As shown in the picture, place the washers and nuts in sequence, then tighten them with an open-end wrench.



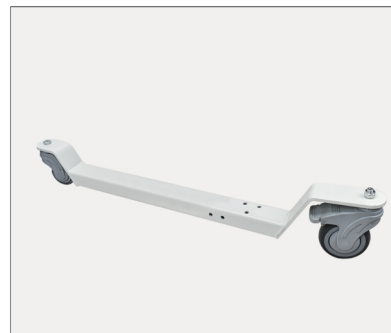
11. Take out all screws and accessories as shown in the picture



12. Insert screws and washers into corresponding holes in the direction of arrows, and tighten them with a wrench.



7. Add screw dustproof caps after locking the casters.



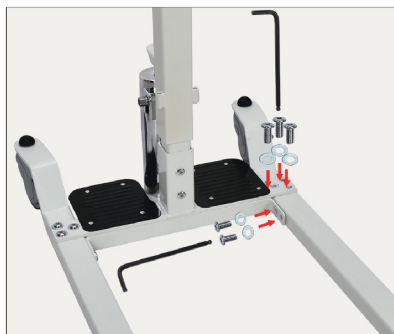
8. One side is finished as shown as above.



13. Finished as above picture.



14. Place the other frame as shown in picture.



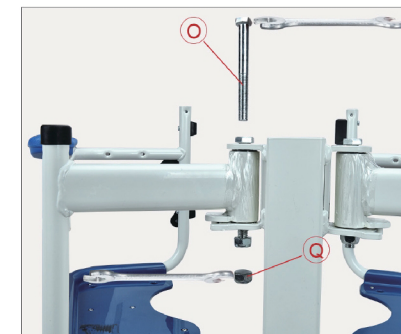
15. Insert screws and washers into corresponding holes in the direction of arrows, tighten them with a wrench



16. Bottom frame finished as above picture



21. On the other side, the seat frame is also inserted into the main frame.



22. Insert the long screw into hole, lock with nuts



17. Take out all screw accessories for the seat frame as shown in picture.



18. Take out the seat frame and insert into corresponding position of the main frame



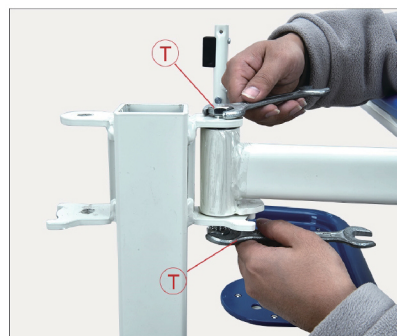
23. Lock the long screw and nuts by two wrenches as picture.



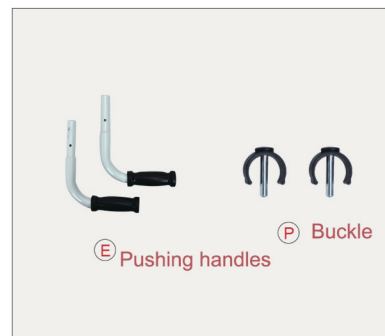
24. Frame installation finished as above.



19. Insert the long screw into hole, lock with the nut.



20. Use two wrenches to tighten long screws and nuts (Note: screws and nuts must be locked tightly because it is an important turning position).



25. Take out all accessories of the handles as shown in picture.



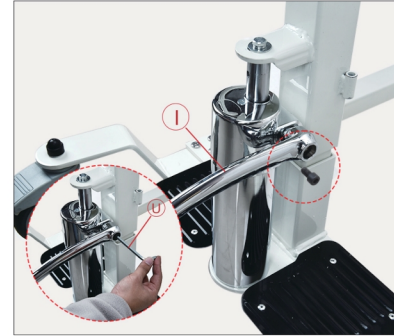
26. Insert the handle into the hole of frame.



27. Insert buckle as shown in picture to fix it.



28. Handles installation finished.



33. Adjust the hydraulic cylinder handle to an appropriate angle and lock it with the screws that were previously removed, then tighten it with a seven shaped hexagonal wrench.



34. Hydraulic cylinder installation finished.



29. Take out storage bag, place it on the main frame and fasten it.



30. Storage bag installation finished.



35. Picture after hydraulic cylinder installation finished.



36. Take out all accessories above.



31. Take out the hydraulic cylinder handle.



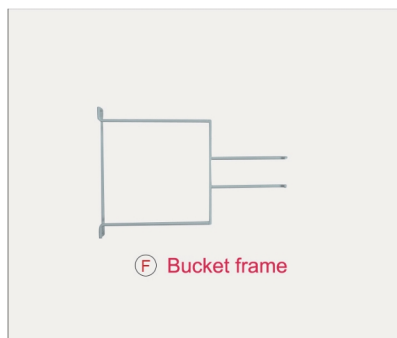
32. Take out the screw of hydraulic cylinder by wrench.



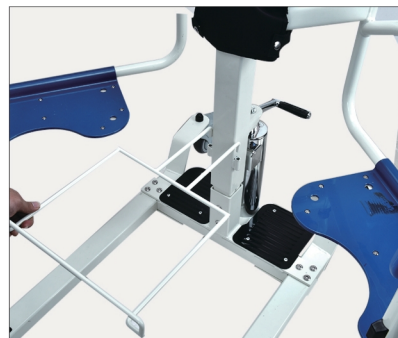
37. Fasten backrest onto seat frame tube, lock in corresponding holes with medium screws in sequence, tighten with hexagonal wrench.



38. Installation of backrest finished.



39. Take out the bucket frame.



40. Insert bucket frame into main frame's holes.



45. The main frame can also be equipped with soft seat panels/boards.



46. The complete installation of whole machine finished as picture.

Instructions for Use



41. Put bucket onto frame as picture.



42. When fastening seat frame, rotate connecting handle until it's locked tightly



1. Push the machine towards the bedside



2. Open the safety buckle



43. Lock tightly as shown in picture.



44. The main frame can be equipped with hard seat panels/boards.



3. Press down the brake by feet, open safety buckle and assist in sitting on the seat panels, close the safety buckle.



4. Adjust height by stepping on hydraulic cylinder handle lightly, don't step on it hard which will lower the height (Reminder: just lightly step on it during lifting, not to be the bottom to avoid lifting function fails)



5. Put in bucket onto frame.



6. Finished as shown in picture.



7. Replace to hard seat panel when using



8. Can be used in bathing scenarios



9. Can be directly used under shower head.



10. Can be pushed onto toilet.



11. After pushing onto toilet.



12. Can change to soft seat panels for sitting.



Adjustable height
Safe and reliable, more lable-saving. Maximum height adjustment: 87~102cm

Universal wheel
Safe and convenient, it can move flexibly when there are roads/ways with turns.

Multiple styles of seat panels/boards
More options, replacement of shower seat and bench seat.